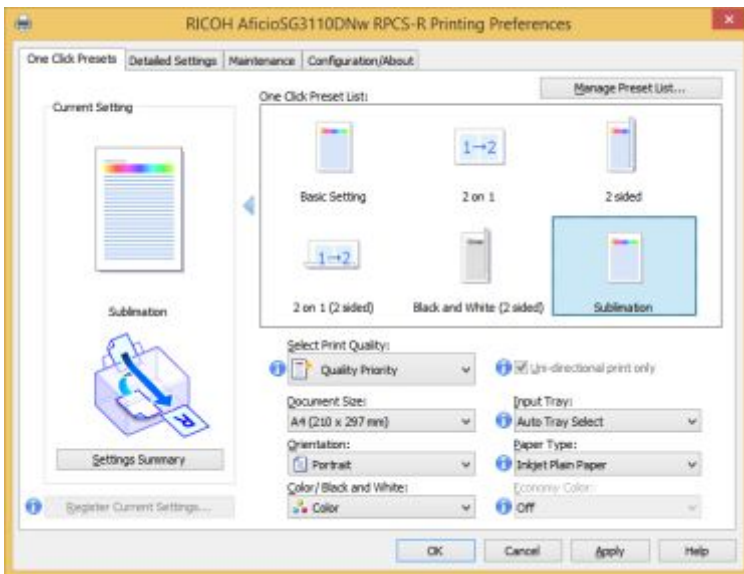
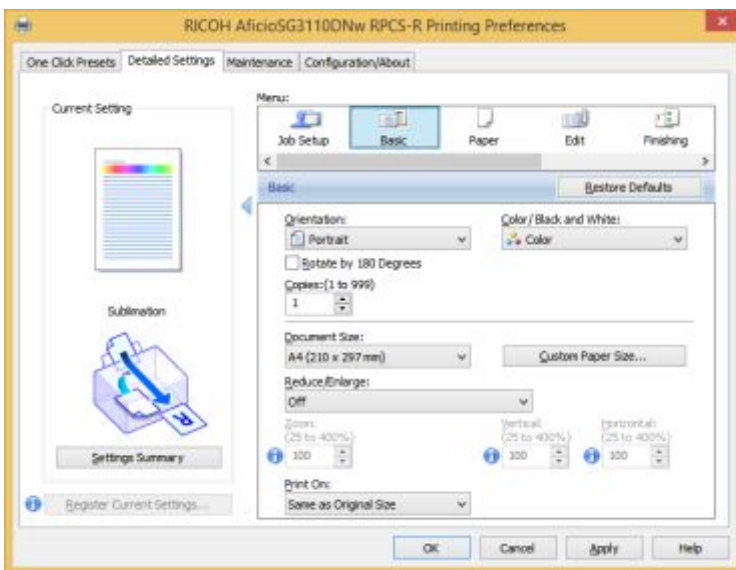


When using the TexPrint-R Mug Sheets by Beaver Paper, in conjunction with your Ricoh printer you will need to setup the Paper size settings within the printer driver as follows.

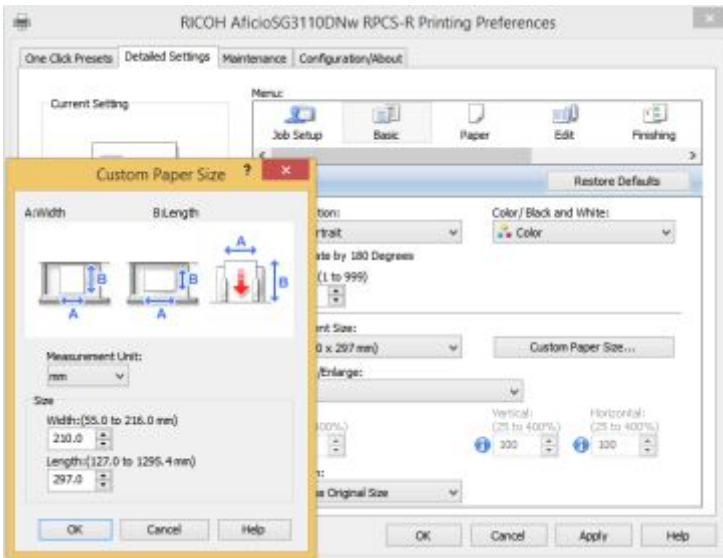
1. Browse to the **Devices and Printers** folder and then 'right click' on the Ricoh printer and select **printing Preferences**. The driver preferences window will appear. In the example below the Ricoh SG3110 has been selected.



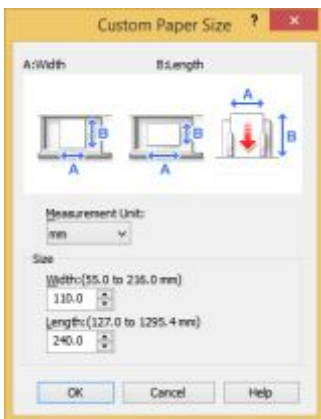
2. Select your Sublimation pre-set setting, and then select the **Detailed Setting** tab.



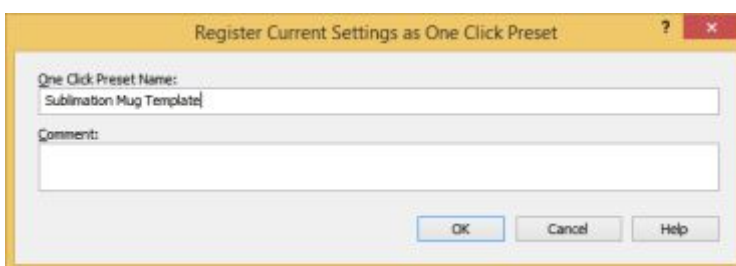
3. Select the **Basic** tab and then select **Custom Paper Size**.



4 Change the Width to **110mm** and the Length to **240mm**, before clicking 'OK' to confirm the change.



5 Within the Driver click **Register Current Settings** and save the setting as **Sublimation Mug Template**.





Xpres Technical Services TexPrint-R Mug Paper Driver Setup

6. Now within your graphics software, when using the new pre-set, print your image centrally to the template as below.

