

SureColor SC-F9400/H



EPSON[®]
EXCEED YOUR VISION

SureColor SC-F9400/H



SureColor SC-F9400
64" Dual head
4 colour ink set
RRP £16,595 (Ex. VAT)
CMYK x 2



SureColor SC-F9400H
64" Dual Head
6 colour ink set
RRP £19,595 (Ex. VAT)
CMYK x2 + Fluorescent Yellow & Pink

Design & Improvements

Refresh of the SC-F9300 with some key changes;

- Fluorescent ink set (SC-F9400H)
- Improved take-up settings
- QR code movie instructions
- EMX support & improved bundled software.



Epson's First Fluorescent Solution



- Genuine Epson ink – brighter than competitors
- Long shelf life (24 months, same as CMYK)

Genuine Fluorescent Solution

Colour Library Printing in Edge Print

EPSON FP001

Ai Ps

Choose the fluor color on printed chart with Edge Print

Select the same color name on the swatch table in design software

Fluorescent color printing completed

EPSON FP001

SureColor 10

Epson Edge Print

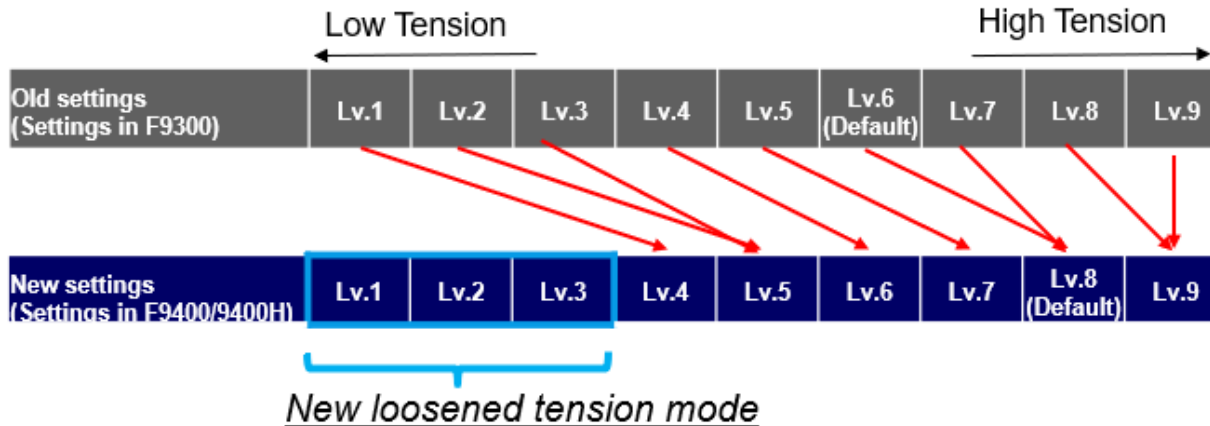
Copyright © 2015 Epson Corporation 2015. All rights reserved.

- 64 fluorescent patches in Epson Edge Print
- Easily installed into Adobe Creative Suite applications
- Create vivid fluorescent tones easily and efficiently

Take-Up Improvements

Take up reel modes

- New take up reel modes added to control appropriate take up tension. (Level. 1~3)
- This mode aims to minimise wrinkles when printing on thin paper and with high duty of inks.



Movie Instructions from QR Codes

Customers can watch the instruction video from QR code label attached to machine.



Software Improvements

Rip Software

- Bundled with the latest Epson Edge Print software for ease of use and a complete solution

Epson Edge Dashboard Support - EMX profiles

- F9400 supports dashboard which means additional profiles can be accessed from the cloud and easily downloaded

Accounting Tool

- Support of Accounting Tool for accurate costing.



Job Information List

EPSON SC-F9400 Series Color Driver
S:\PRINT\BACKLOG
Data Acquisition: 1/28/2018 10:18 PM

Accumulated Media Usage: 14 ml Accumulated Ink Usage: 795 ml

Private EPSON SC-F9400 Series Color Driver (S/N: 1) Add Printer Print Settings Preferences Default Data

Period: [] Showing Month: [] Starting On: [] Jobs to display: [] Search Other Settings

Job Name	Total Cost	Media Type	Media Usage	Ink Usage	Completion T.	User Name	Job Status
020_Cademy_CADAC_021.Drw...	\$ 1.00	6xP	0.16 ml	0.04 ml	1/28/2018 2:00:00	Completed	Completed
Resume Check	\$ 0.00	6xP	0.00 ml	0.00 ml	1/28/2018 2:00:00	Printer	Completed
Resume Check	\$ 0.00	6xP	0.00 ml	0.00 ml	1/28/2018 2:00:00	Printer	Completed
Remaining Length	\$ 0.00	No Paper Set	0.00 ml	0.00 ml	1/28/2018 4:00:00	Printer	Completed
Remaining Length	\$ 0.00	No Paper Set	0.00 ml	0.00 ml	1/28/2018 4:00:00	Printer	Completed
Remaining Length	\$ 0.00	No Paper Set	0.00 ml	0.00 ml	1/28/2018 4:00:00	Printer	Completed
Head Alignment	\$ 0.00	No Paper Set	0.00 ml	0.00 ml	1/28/2018 4:00:00	Printer	Completed
Head Alignment	\$ 0.00	No Paper Set	0.00 ml	0.00 ml	1/28/2018 4:00:00	Printer	Completed
Head Alignment	\$ 0.01	No Paper Set	0.00 ml	0.01 ml	1/28/2018 4:00:00	Printer	Completed

Summary of Selected Period

Total Jobs: 1
Total Ink: 100.18 ml \$ 1.00
Total Media: 2.00 ml \$ 0.20
Other Costs: 0.00 \$ 0.00
Total Cost: \$ 1.20

Note: Total Ink includes ink used for printer maintenance.

Inks

- Fluor ink sold in **1 Litre bags** ******SC-F9400H only******
- CMYK sold in 1.1 litre bags (same SKU as SC-F6300)
- HDK only, no standard K

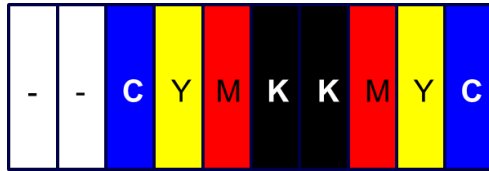


******SC-F9300 ink not compatible with SC-F9400/H******

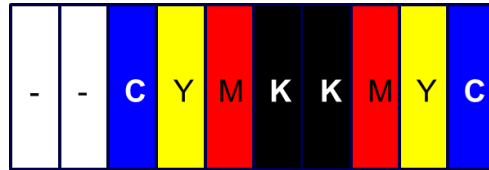
Throughput Comparison

F9300/F9400 series

Head 1



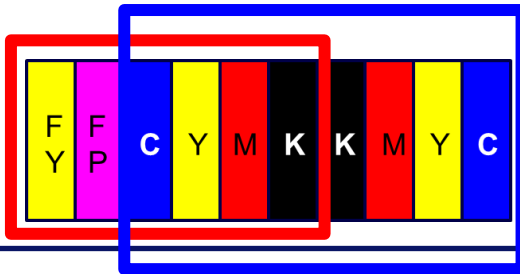
Head 2



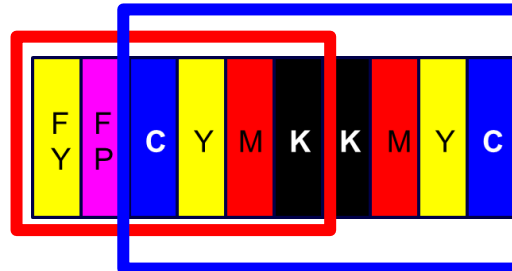
F9400H series

Head 1

4C mode



Head 2



- Throughput of F9400H in 4-colour mode is the same as F9400

Throughput — 4-Colour Mode (SC-F9400/H)

<Fabric>

 : Recommended pass

Print mode	Pass	Resolution	m ² /h
1pass Draft	1	360x720	108.6
1pass	1.2		93.3
2pass	2.2		57.9
3pass	3		44.1
2pass Speed	2.1	720x720	60.1
2pass	2.5		52.8
3pass	3		44.1
4pass	4.6		29.9
4pass High Quality	4.6		25.4
5pass	5		27.4
5pass High Quality	5	23.2	
6pass	6.7	720x1440	20.7
6pass High Quality	6.7		17.5
8pass	8.6		15.6
8pass High Quality	8.6		13.3

<Rigid>

Print mode	Pass	Resolution	m ² /h
6pass	6.7	720x1440	20.7
8pass High Quality	8.6		13.3

Throughput — 6-Colour Mode (SC-F9400H)

<Fabric>

 : Recommended pass

Print mode	Pass	Resolution(dpi)	m ² /h
2pass	2.0	360x720	62
4pass	4.2	720x720	32.1
6pass	6.3		21.9
8pass	8.5		15.8

<Rigid>

Print mode	Pass	Resolution	m ² /h
12pass	12.9	720x1440	10.6
12pass(VSD2)	12.9		9.0

Certification

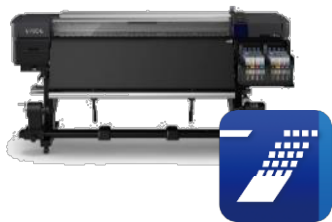
- CMYK ink already has certification of OEKO-TEX Eco passport
- FY/FP inks is in process of getting certification



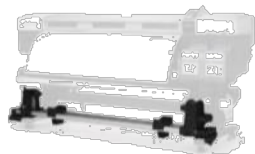
BOM Configuration

SC-F9400

One main unit



One Substrate support system

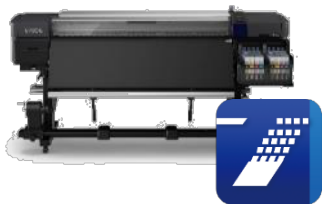


Two sets CMYK ink

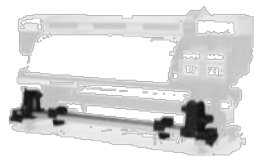


SC-F9400H

One main unit



One Substrate support system



Two sets CMYK ink



One set FY/FP ink



Thank you!

EPSON[®]
EXCEED YOUR VISION