

JV300 Series



Versatile, high-quality production printer...



SIGN &
GRAPHICS



TEXTILE &
APPAREL

Mimaki

The world imagines... Mimaki delivers



Mimaki

Next-generation printer with beautiful output and high productivity

Mimaki's latest high performance JV300 Series sets a new bench mark for professional wide format printers. With the unrivalled versatility of multiple ink types, the JV300 delivers stunning photo-quality prints at class-leading speeds and provides the ultimate wide format solution for sign & graphics professionals, sportswear and fashion manufacturers, print shops and more.

ENGINEERING EXCELLENCE AND CREATIVE INNOVATION

Founded in Japan in 1975, Mimaki Engineering has steadily grown by reputation and influence into a global company with large operational bases in Asia and the Pacific, United States and Europe.

Renowned for award-winning performance, peerless build quality and innovative technology, Mimaki has established itself as a leading manufacturer of wide-format inkjet printers and cutting machines for the sign and graphics, textile and apparel and industrial markets. In addition, Mimaki also provides a comprehensive range of supporting products; hardware, software and associated consumable items, such as inks and cutting blades.

From outdoor signage and billboards to interior decoration and furnishing, from packaging and labels to promotional gifts and apparel, Mimaki is committed to developing technology that sets new industry standards, producing machines and products that turn the imagination of our customers into breath-taking reality.

... **Mimaki delivers**

JV300 series delivers ...

- Fast printing speeds up to 105.9m² per hour
- High quality print resolution of up to 1,440 dpi
- Two different printing widths: 1,361mm and 1,610mm
- Choice of multiple eco-solvent and dye sub ink sets:
 - 9-colour options (SS21) including; Orange, Light Black & White inks
 - Vibrant 6-colour dye sub options (Sb53)
- UISS and optional MBIS III on board 2 litre bulk ink system
- MAPS3 with variable dot and large ink drop providing high quality at high speed
- 3-way intelligent heater

SOLVENT & DYE SUB INKS

2 PRINT WIDTHS AVAILABLE

1,440 DPI MAX RESOLUTION

4/6/7/8 COLOUR MODES

105.9m²/h MAX. SPEED

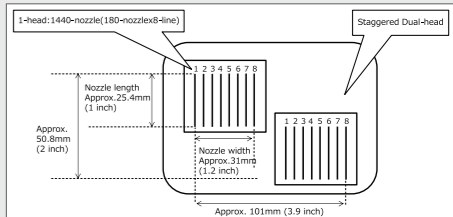
JV300 Series
JV300-130 / JV300-160



HIGH PRODUCTIVITY

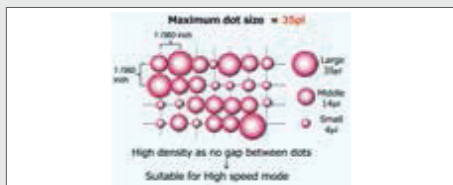
Staggered Dual Print Head

Ensures wide band printing, even at high print speeds.



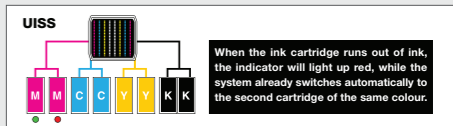
Large ink dot size in high speed mode

Delivers high density print by removing the gap between dots.



Uninterrupted Ink Supply System (UISS)

Utilises two cartridges per colour in 4-colour mode. When one cartridge runs out of ink the system switches automatically to the second cartridge of the same colour, enabling long unattended printing.



Create ... Signage, Vehicle graphics, PoS, Banners, Posters, Fashion & Sportswear, Promotional, Exhibition graphics, Stickers, Garment marking, Canvas prints and much more...

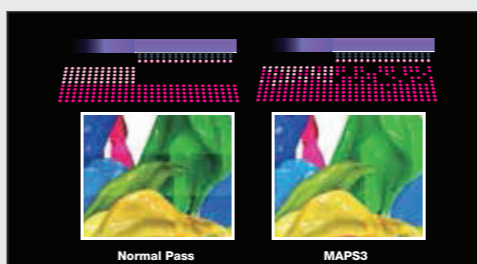
KEY TECHNICAL FEATURES ...

4-colour (C, M, Y, K)		8-colour (C, M, Y, K, Lc, Lm, Lk, Lg)		6-colour+ (C, M, Y, K, Lc, Lm) + White	
PVC	0 10 20 30 40m ² /h	Banner	0 10 20 30 40 50 60 70 80 90 100m ² /h	PVC	0 10 20 30 40m ² /h
Draft 540x720dpi 4Pass Bi Hi	32.7m ² /h	Super Draft 360x360dpi 1Pass Bi Hi	105.9m ² /h	Draft 540x360dpi 6Pass Bi Hi	22.7m ² /h
High Speed 720x720dpi 6Pass Bi Hi	20.2m ² /h	Draft 540x360dpi 2Pass Bi Hi	69.2m ² /h	High Speed 540x720dpi 8Pass Bi Hi	17.2m ² /h
Standard 720x1440dpi 12Pass Bi Hi	10.4m ² /h	High Speed 540x720dpi 4Pass Bi Hi	32.7m ² /h	Standard 720x720dpi 12Pass Bi Hi	10.5m ² /h
High Quality 1440x1440dpi 16Pass Bi Hi	4.3m ² /h	Standard 720x720dpi 4Pass Bi Hi	29.5m ² /h	High Quality 720x1440dpi 24Pass Bi Hi	5.3m ² /h
		High Quality 720x1080dpi 8Pass Bi Hi	15.4m ² /h		
				Banner	0 10 20 30 40 50m ² /h
				Draft 360x360dpi 2Pass Bi Hi	50.5m ² /h
				High Speed 540x360dpi 4Pass Bi Hi	33.9m ² /h
				Standard 540x720dpi 8Pass Bi Hi	17.2m ² /h
				High Quality 720x1080dpi 16Pass Bi Hi	7.9m ² /h
				White 2-layer print	0 2 4 6 8m ² /h
				High Speed 720x720dpi 10Pass Bi Hi	6.2m ² /h
				Standard 720x720dpi 18Pass Bi Hi	3.5m ² /h
				High Quality 1440x1440dpi 32Pass Bi Hi	1.3m ² /h

BEAUTIFUL OUTPUT

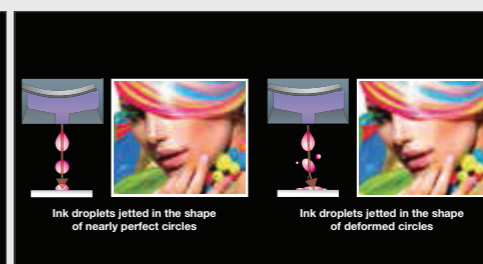
MAPS3 (Mimaki Advanced Pass System 3)

Ensures more even drying of inks by dispersing ink drops between passes.



Waveform Control Technology

Ensures high quality print resolution, by jetting ink drops in straight lines with almost perfect round dots, delivering clear and sharp letters, lines and edges.

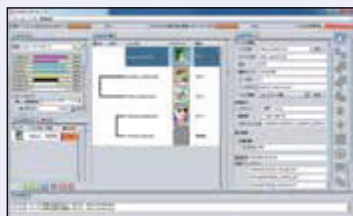


Orange & Light Black SS21 Inks

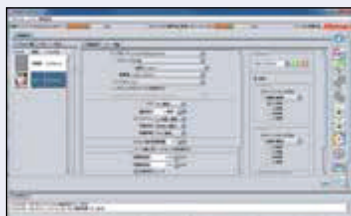
New orange process ink delivers wider gamut to cover 92% of the PANTONE colour chart. Light black gives superior grey balance control and accurate greyscale printing.



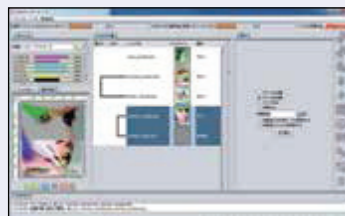
Intuitive and user-friendly operation



1. Easy to follow icons enable intuitive and user-friendly operation



2. Related settings feature in one window to simplify RIP operations with 'Register as Favourite' option available for regularly used layouts



3. Printing progress can be monitored on the main screen

3-layer printing

Enables simultaneous 3-layer printing:
e.g. Colour → White → Colour

Web update function is supported:

This facility enables easy program updates and profile downloading to be performed via the internet.

Specifications

	JV300-130	JV300-160
Print head	On-demand piezo head (staggered dual-head)	
Resolution	360 dpi, 540 dpi, 720 dpi, 1440 dpi	
Drop size	Min. 4pl, Max.35pl	
Head height	2.0mm/2.5mm/3.0mm (+1.0mm or +2.0mm) * manual adjustment	
Ink type	Eco solvent ink: SS21/BS3/ES3 (to be available separately)	
Ink colour	SS21: 9-colour (CMYKLCmLkOrW), BS3(CMYK), ES3(TBD)	
Ink capacity	SS21:440ml cartridge/2L ink pack (W:220ml cartridge only) BS3:600ml ink pack ES3:440ml cartridge (W:220ml, cartridge only)	
Max. printing width	Max.1,361mm	Max.1,610mm
Max. media width	Max.1,371mm	Max.1,620mm
Media thickness	1.0mm or less	
Roll weight	40kg or less	
Outside dimension	2,541mm(W) x 707mm(D) x 1,392mm(H)	2,793mm(W) x 707mm(D) x 1,392mm(H)
Packing size	2,666mm(W)x750mm(D)x1,050mm(H)	2,916mm(W) x 750mm(D) x 1,050mm(H)
Body weight	170.6kg	182.4kg
Power supply	2x Single phase (AC100~120V/220~240V +/-10%) 50/60Hz±1Hz	
Power consumption	1,440Wx2 or less (at AC 100V system) / 1,920Wx2 or less (at AC 200V system)	
Applicable standards	VCCI class A / FCC class A / UL60950-1ETL / CE Marking (EMC, Low Voltage and Machinery) CB report / RoHS / REACH•CCC(pending)•Energy Star	
Operational environment	Temperature: 20-30 °C (68-86 °F) Humidity: 35-65% Rh (Non condensing)	

4 different ink set options available:

4 x Ink Set Options

C M Y K
4-colour (high speed printing)

C M Y K Lc Lm Lk Or
8-colour (smooth, vibrant colours)

C M Y K Lc Lm W W
6-colour + White/White (high density white printing)

B M Y Dk Lb Lm
6-colour (dye sub printing)

SS21

Sb53

JV300 provides even greater versatility and productivity with 4 different ink set options, including solvent and dye sub inks.

Supplies

Item	Colour			
SS21	Cyan	SPC-0501C	440ml Ink cartridge	
	Magenta	SPC-0501M		
	Yellow	SPC-0501Y		
	Black	SPC-0501K		
	Light Cyan	SPC-0501LC		
	Light Magenta	SPC-0501LM		
	Light Black	SPC-0501Or		
	Orange	SPC-0501Lk		
	White	SPC-0504W-2		220ml Ink cartridge
	Cyan	SPC-0588C		2,000ml Ink pack
Magenta	SPC-0588M			
Yellow	SPC-0588Y			
Black	SPC-0588K			
Light Cyan	SPC-0588LC			
Light Magenta	SPC-0588LM			
Light Black	SPC-0588Or			
Orange	SPC-0588Lk			
Sb53	Blue	SB53-BL-44	440ml Ink cartridge	
	Magenta	SB53-M-44		
	Yellow	SB53-Y-44		
	Black	SB53-K-44		
	Deep Black	SB53-DK-44		
	Light Blue	SB53-LBL-44		
	Light Magenta	SB53-LM-44		
	Blue	SB53-BL-2L		2,000ml Ink pack
	Magenta	SB53-M-2L		
	Yellow	SB53-Y-2L		
Black	SB53-K-2L			
Deep Black	SB53-DK-2L			
Light Blue	SB53-LBL-2L			
Light Magenta	SB53-LM-2L			

• Some of the samples in this folder are artificial renderings • Specifications, design and dimensions stated in this folder may be subject to change without notice (for technical improvements, etc.)
• The corporate and merchandise names written on this folder are the trademark of the respective corporations • Inkjet printers print using extreme fine dots, so colours may vary after replacement of the printing heads, also note that if using multiple printer units, colours could vary slightly from one unit to other unit due to slight individual differences • Composer's errors reserved

Mimaki is exclusively distributed in the UK & Ireland by:

Hybrid Services Ltd

Nº 3, Gateway, Crewe, Cheshire. CW1 6YY
01270 501 900

info@hybridservices.co.uk
www.hybridservices.co.uk

@HybridServices

facebook.com/HybridServicesLtd

hybrid

Mimaki Exclusive Distributors

Mimaki

www.mimakieurope.com info@mimakieurope.com @MimakiEurope

Mimaki Europe B.V. Stammerdijk 7E, 1112 AA Diemen, The Netherlands Tel: +31 (0)20 4627640